



Netter Electric Internal Vibrators for slip form pavers Series NCX M



- Highest compaction rate
- Interchangeable elements, very service friendly
- Straight, elbow shaped and horizontal T-version available
- T- vibrator with 2 different unbalances (CC version)
- 110 Volt, 200 Hz
- Optional thermal trips available



NCX M straight



NCX M elbow shaped



NCX M horizontal



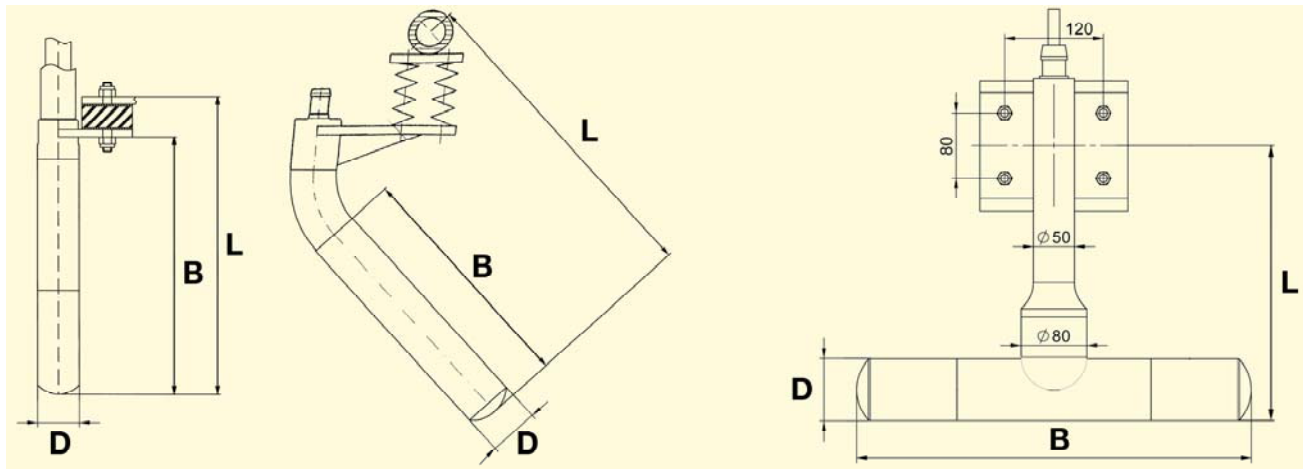
NetterVibration



Netter Electric Internal Vibrators Series NCX M

| Type | Head diameter D [mm] | Total length L [mm] | Head length B [mm] | Head weight [kg] | Total weight [kg] | Nominal frequency [min ⁻¹] | Centrifugal force [N] | Influenced zone [cm] | Current consumption [A] | |
|------------|----------------------|---------------------|--------------------|------------------|-------------------|--|-----------------------|----------------------|-------------------------|------|
| straight | NCX M 660G | 66 | 470 | 410 | 11,0 | 14,0 | 12.000 | 6.000 | 110 | 9,0 |
| elbow | NCX M 660 | 66 | 490 | 390 | 11,0 | 20,0 | 12.000 | 6.000 | 110 | 9,0 |
| | NCX M 760 | 76 | 640 | 480 | 16,5 | 28,0 | 12.000 | 9.000 | 150 | 11,0 |
| horizontal | NCX M 760 T 4,0 | 76 | 343 | 480 | 20,0 | 30,0 | 12.000 | 4.000 | 150 | 11,0 |
| | NCX M 760 T 5,6 | 76 | 343 | 480 | 20,0 | 30,0 | 12.000 | 5.600 | 150 | 11,0 |
| | NCX M 760 T 7,2 | 76 | 343 | 480 | 20,0 | 30,0 | 12.000 | 7.200 | 150 | 11,0 |
| | NCX M 760 T CC | 76 | 343 | 480 | 20,0 | 30,0 | 12.000 | 5.600/ 7.200 | 150 | 11,0 |

Standard version: 110 V, protective hose 1,5 m, cable 6 m, CEE connector. Other voltages, hose and cable lengths on request.



NCX M straight

NCX M elbow shaped

NCX M T horizontal

Applications:

Series NCX M electric internal vibrators are mainly used in concrete slip form pavers. Compared to conventional vibrators the enormously increased centrifugal force permits a higher compaction rate. The resulting optimum removal of entrapped air fulfills the requirements of modern concrete technology.

Design and Function:

The modular design makes these vibrators very easy to service. For mounting standard tools can be used.

The vibrators can be fitted optionally with thermal trips. These will prevent breakdowns from overheating.

The special feature of the NCX M T CC is that it can be operated in both rotational directions using an appropriate control. When the NCX M T CC rotates in one direction, it works with a centrifugal force of 7.2 kN. Upon change of the rotational direction the unbalances shift relative to each other, so that the vibrator works with a centrifugal force of only 5.6 kN.

Nominal voltage / Nominal frequency:

110 V, 200 Hz

NetterVibration supplies the suitable accessories for mounting, installation, control and monitoring of vibrators and impactors.

Netter provides solutions.

Consult our experienced application technicians.

Netter GmbH

Germany

Fritz-Ullmann-Str. 9
55252 Mainz-Kastel
Tel. +49 6134 2901-0

Poland

Al. W. Korfantego 195/17
40-153 Katowice
Tel. +48 32 2050947

Switzerland

Erlenweg 4
4310 Rheinfelden
Tel. +41 61 8316200

Spain

Errota Kalea 8
20150 Villabona-Guipúzcoa
Tel. +34 943 694 994

www.**NetterVibration.com**
info@**NetterVibration.com**